

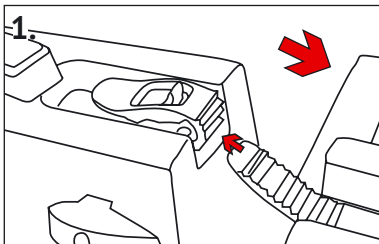


Manual

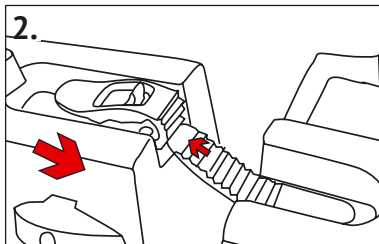
*This manual will help you with the basics of putting your KingFisher together for your next fishing experience. After some practice it will literally take you 10 seconds to assemble your KingFisher. To take it apart simply reverse the process.*

*Please read the warning sticker on your kayak for a safe and fun paddling experience.*

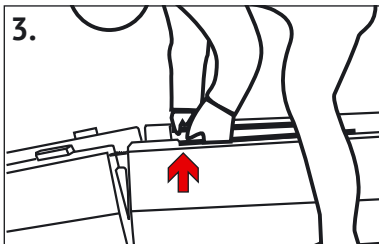
*You will also find easy-to-follow instructional videos on [www.youtube.com/Point65TV](http://www.youtube.com/Point65TV)*



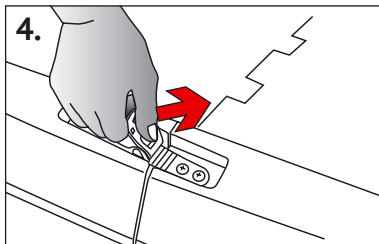
Place ratchet strap in correct position in buckle on both sides of the kayak.



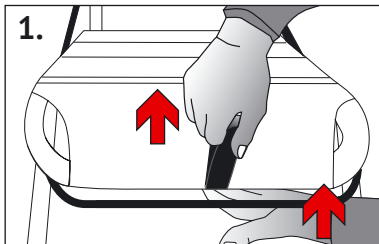
Push both parts of the kayak together, so that the ratchet strap is approx 2 cm inside the buckle.



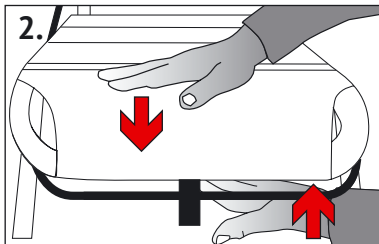
Straddle the front part of the kayak facing backwards and lift, using the rails, hooking the two parts together, then lower, automatically locking them.



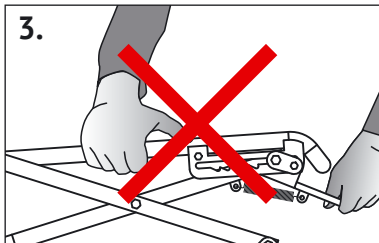
Tighten the buckle, but do not overload buckle, as this can damage the ratchet strap or buckle lever. You can also lift the back and the buckle will close automatically.



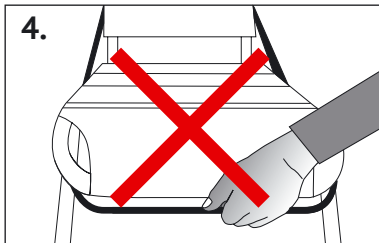
1. To raise chair, attach the seat in deck rail and push up bar under front of seat using a flat hand. Pull strap upward at the same time.



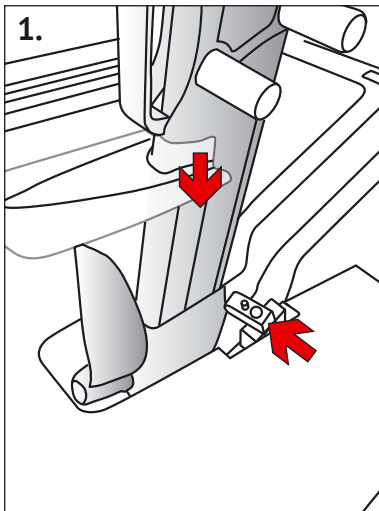
2. To lower the chair, push the bar below the seat upward, using a flat hand, while pushing the chair down.



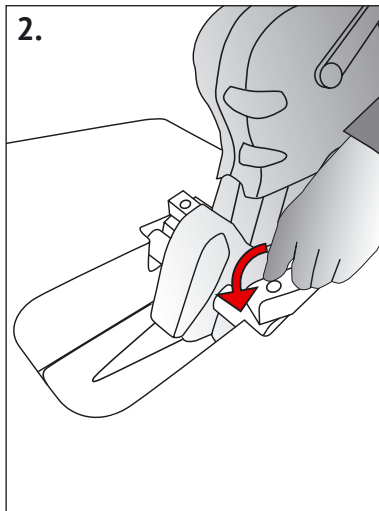
3. **WARNING!** Do not put fingers into the sides while lowering or raising the chair, as you could damage your fingers.



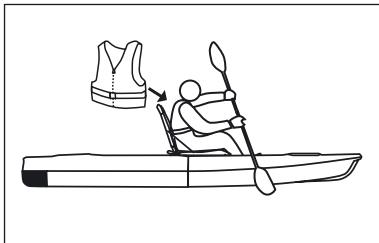
4. **WARNING!** Do not put your fingers around the bar while lowering or raising the chair, as you could damage your fingers.



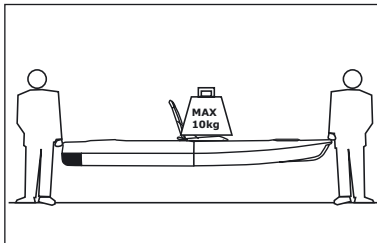
1. Lower the Impulse Drive into the well in front of the seat. Make sure both locks are pointing inward toward the Impulse Drive as shown above.



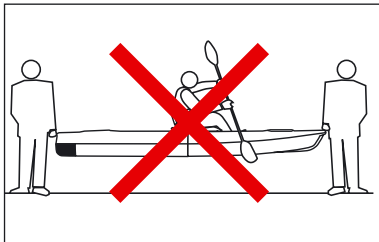
2. Lower the Impulse Drive all the way into the well and turn both locks toward the rear of the kayak to lock the Drive in place.



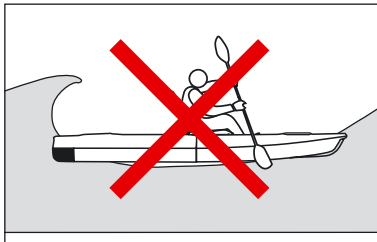
Always use a personal flotation device when paddling. Read warning sticker on kayak before usage.



Never place heavy objects in the kayak while carrying or dragging, as this can damage the locking system.



Never carry or drag the kayak with someone sitting in the kayak, as this can damage the locking system.



Never paddle the kayak in surf higher than 3 feet, as this can lead to damage in the locking system.

*Happy paddling!*

**POINT 65°N**  
S W E D E N

[www.point65.com](http://www.point65.com)